

# ASHVINS GROUP

TECHNOLOGY PROFESSIONALS

**Accelerate Development  
Reduce Time to Product  
Automate Critical Tasks**

## COMPANY CAPABILITY STATEMENT

The ASHVINS GROUP, Inc.  
Lynn Hilt, President/CEO  
6161 Blue Lagoon Drive, #340  
Miami, FL 33126  
305-264-4442  
[www.ASHVINSGroup.com](http://www.ASHVINSGroup.com)

GSA Contract #: GS-35F-0561T  
CAGE #: 49ZF1  
D-U-N-S #:10-252-0355

*This summary includes information that shall not be disclosed outside of the intended recipient and shall not be duplicated, used, or disclosed in whole or in part for any purpose. All information contained in this summary is restricted unless otherwise stated in writing by The Ashvins Group.*

## 1.0 INTRODUCTION

---

### 1.1 Company Background

**The Ashvins Group Inc.** is a team of IT consultants who design, develop, test and implement custom software and data management projects. We offer Full Life Cycle Application Development and Validation services with a specialty in healthcare, medical and clinical data management applications. Our expertise includes FDA and HIPAA compliant applications development. The Ashvins Group is a Florida corporation since 2000 and classified as a Women Owned Small Business.

**The Ashvins Group** applies disciplined application development industry standards combined with our unique Rapid Development Methodology (RDM) and project management practice to achieve client goals. As Development Accelerators, the Ashvins Group will enable clients to meet their critical objectives effectively while reducing time to implement and managing expenses. We utilize controlled processes and apply rigid documentation practices commensurate with healthcare industry compliance requirements and regulations. The company has been awarded a GSA Schedule (Contract # GS-35F-0561T) and is positioning their skills in project management and application development for government agencies.

### 1.2 IT Skills Summary

<i>Application Development and Design</i>	<i>Multi-tiered Architecture Design</i>
<i>Systems Interfaces &amp; Integration</i>	<i>Data Management and Analysis Software</i>
<i>Web Based and Windows Clients</i>	<i>Comprehensive Reports Design and Statistical Analysis</i>
<i>Custom Database Development</i>	<i>Intuitive UI Development and Visual Presentation</i>
<i>Requirements Development Facilitation</i>	<i>Documentation for Regulated Environments</i>
<i>IT Project Management and Consulting</i>	<i>Verification and Validation Services</i>

## 2.0 ORGANIZATIONAL STRUCTURE

---

### 2.1 History and Overview of the Company

The Ashvins Group was incorporated in Florida in December 2000 for IT consulting. The group includes a talented and diverse team with solid business, healthcare, scientific and IT technology experience. The company designs, develops, tests and implements custom software, data management and system integration applications specific to healthcare and regulated industries.

### 2.2 Description of Services

The company's primary lines of business include the design, development and validation of custom software applications. Specific types of services are highlighted in the table below.

---

<b><u>Design &amp; Specifications</u></b>	<b><u>Applications Development</u></b>	<b><u>Validation &amp; Documentation</u></b>
✓ Prepare detailed Software Requirements Specification (SRS)	✓ Identify SW Modules	✓ Prepare Test Protocols
✓ Conduct Use Case Analysis	✓ Conduct Program Coding	✓ Conduct Integration & System Testing
✓ Complete UML Modeling	✓ Complete Unit Testing	✓ Manage Defect Tracking
✓ Develop Design Architecture	✓ Implement Change Management	✓ Document Validation Efforts

---

## 2.3 Organizational Elements Participating in IT Services

The corporate organization is structured to provide maximum visibility, control, and communications for company projects and individual task orders. At the top level the company, the Director Project Management and the Director Business Development will have primary responsibility for all Government projects. In addition, the company has a network of experienced IT professionals (employees and contractors) to call upon for specific skills and resources as needed.

## 3.0 PROFESSIONAL SERVICES PAST PERFORMANCE

### 3.1 Past Performance Evaluation Report

A Past Performance Evaluation Report assessed by an independent research source, Open Ratings, Dun & Bradstreet was completed in May2007 to support GSA submission. The original PPE Report was sent by Open Ratings to the GSA/FSS, IT Acquisition Center/FCI, Crystal Plaza #4, Room 606, 2200 Crystal Drive, Arlington, VA 22202. The overall performance rating of The Ashvins Group was calculated as **94%** (copies available upon request).

### 3.2 Past Performance

This section contains descriptions of projects where The Ashvins Group provided information technology professional services to commercial clients.

#### 3.2.1 Health Management System

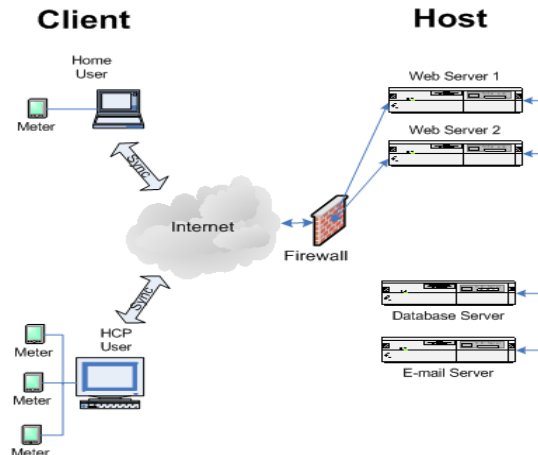
**Description:** Development and Validation of a Clinical Data Management Application

**Client Profile:** A global clinical company that develops personal and portable medical devices. The devices are meters for glucose monitoring. The client was interested in a data management application that connects patients with healthcare providers to support remote monitoring and disease management.

**Methodologies Used:** Visual C++, Borland Delphi, Bluetooth Technologies, UML, Requirements Engineering, Use Case Analysis and UML, Change Control, Defect Tracking, Application Development and Validation per FDA Guidelines

**Project Summary:** The client needed a state-of-the-art web enabled system that manages patient blood glucose results in order to maintain their market leadership and provide patients a system that efficiently tracks results and shares data with Healthcare Providers. The development effort included a Windows based client application and a backend database that communicate via Web interface in order to share data among subscribers while adhering to HIPAA guidelines.

- Allows Diabetes Patients and Health Care Providers to share critical data in order to remotely monitor patient data
- Interfaces to Medical Devices (including wireless) and Medical Records Synchronization
- Multi-tier architecture, SQL database, Web Server and Windows based client
- Intuitive GUI, graphical displays, comprehensive reports for healthcare management



### 3.2.2 Quality Assurance Network

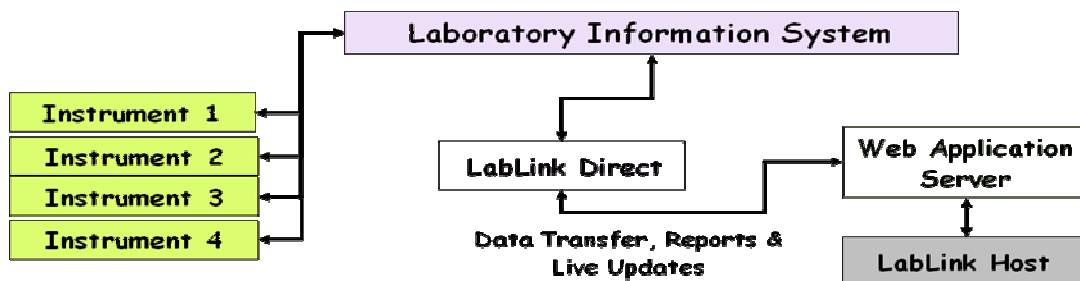
**Description:** Development and Validation of a Data Management Application for Clinical QC Test Data

**Client Profile:** A global clinical diagnostics company developing quality control reagents and test systems. The client was interested in a data management application that provides quality control reports for Clinical Laboratories.

**Methodologies Used:** Visual C++, Java, Requirements Engineering, Oracle DB, Change Control, Defect Tracking, Application Development and Validation per FDA Guidelines

**Project Summary:** The goal of the project was to develop an easy to use system to support Clinical Laboratory QC processes and peer review for clinical test systems.

- Quality Control for Clinical Laboratories
- Automated QC interfaced with LIS/HIS and instrumentation (HL7)
- Custom database with 10,000 global participants; statistical reports and software updates available in real-time
- Windows based system with Web interface; Multi-tier architecture, Oracle database



### 3.2.3 Medical Device Data Management Application

**Description:** Development and Validation of a Data Management Application for Insulin Pumps

**Client Profile:** A global clinical and medical device company developing insulin delivery technologies (insulin pumps). The client was interested in a data management application that provides reports to summarize / trend patient data and information pertaining to the patient's insulin pump.

**Methodologies Used:** Visual C++, Bluetooth Technologies, UML, Requirements Engineering, Use Case Analysis and UML, Change Control, Defect Tracking, Application Development and Verification per FDA Guidelines

**Project Summary:** Ashvins' focus in this project was the development of a Windows based application that will interface with the insulin pumps and data management applications to facilitate the tracking and trending of medical data. Additionally, the application also facilitates sharing of data between patients and Healthcare Providers via a Web interface for remote monitoring.

- Data management application to support insulin pump users
- Wireless connection to pump, interfaces to data management systems and automatic device reading
- Allows Healthcare Providers to view pump history, troubleshoot issues remotely and review data from users
- Extensible architecture to support future expansion
- Intuitive GUI, complex reporting, configurable features

